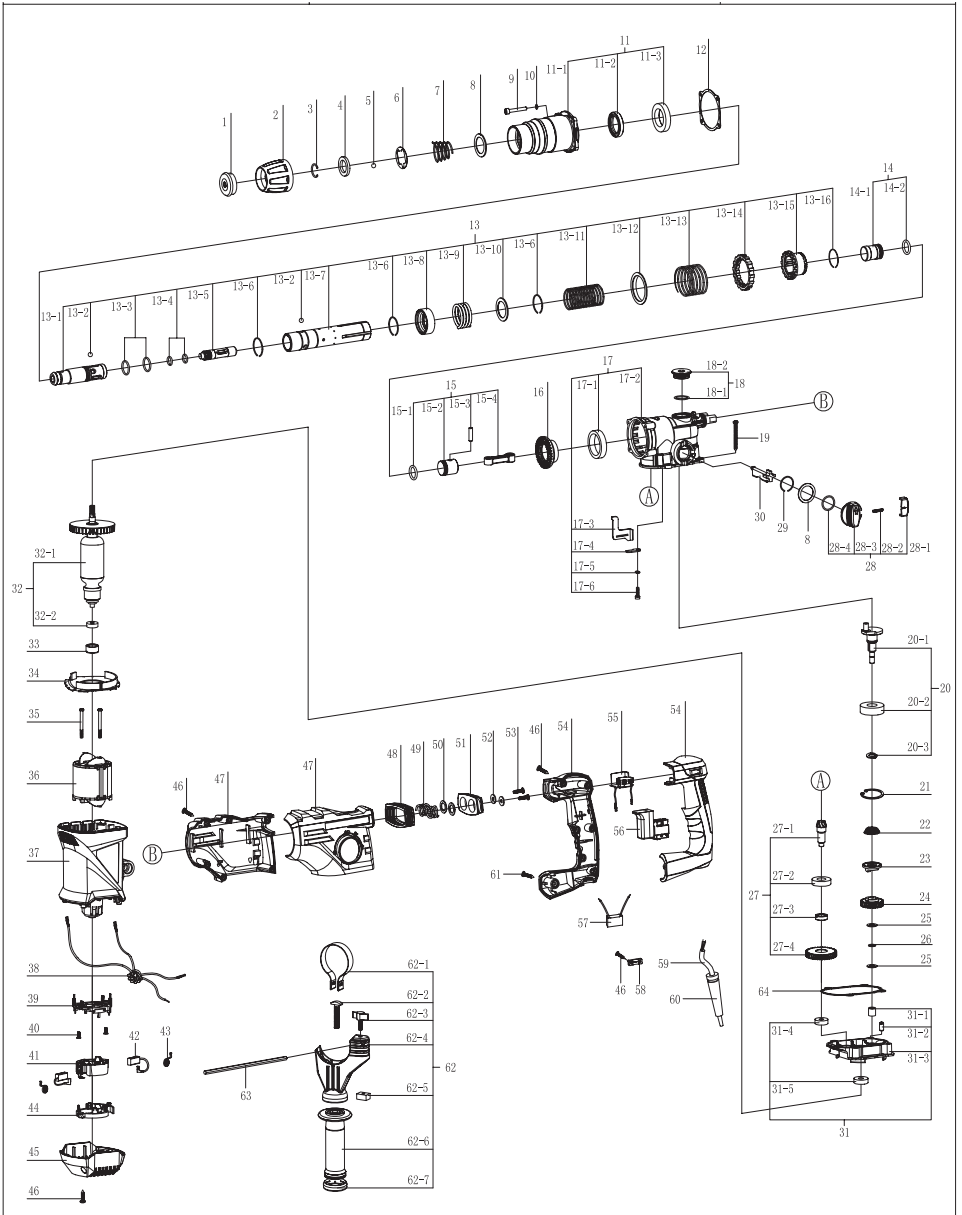


EXPLODED VIEW OF RD-HD46



PARTS LIST OF RD-HD46

NO	DESCRIPTION
1	Protective cap
2	Protective sleeve
3	Snap ring 19×2
4	Washer
5	Steel Ball φ7.14
6	Holding plate
7	Spring
8	Washer
9	"Soket head screw M5x25"
10	Spring washer
11	Gear housing assy
11-1	Gear housing
11-2	Oil seal 41x30x7
11-3	Ball bearing 61906
12	Paper washer
13	Ratchet sleeve assy
13-1	Drill bushing
13-2	Steel Ball φ7.14
13-3	O-ring
13-4	O-ring
13-5	Impact bolt
13-6	O-ring
13-7	Ratchet sleeve
13-8	O-ring
13-9	Compression spring
13-10	Washer
13-11	Clutch spring
13-12	Spring plate
13-13	Clutch spring
13-14	Clutch sleeve
13-15	Clutch
13-16	O-ring
14	Striker Assy
14-1	Striker
14-2	O-ring
15	Connecting rod assy
15-1	O-ring
15-2	Piston
15-3	Pin
15-4	Connecting rod
16	Bevel gear
17	Gear box assy
17-1	Bushing
17-2	Gear box

NO	DESCRIPTION
17-3	Shift plate 1
17-4	Shift plate 2
17-5	Spring washer 4
17-6	Soket head screw M4x16
18	Oil cap assy
18-1	O-ring
18-2	Oil cap
19	Screw ST4.8*50
20	Crank shaft assy
20-1	Crank shaft
20-2	Ball bearing 6203
20-3	Circlip 16
21	Circlip
22	Spring
23	Small clutch
24	Gear
25	Washer
26	Needle bearing AXK0816
27	Pinion assy
27-1	Pinion
27-2	Ball bearing 16002
27-3	Distance bushing
27-4	Big gear
28	Selector knob assy
28-1	Red button
28-2	Spring
28-3	Selector knob
28-4	O-ring
29	Circlip φ22
30	Transfer shaft
31	Bottom cover assy
31-1	Needle bearing HK0808
31-2	Pin
31-3	Bottom cover
31-4	Ball bearing 608
31-5	Ball bearing 609
32	Armature assy
32-1	Armature
32-2	Ball bearing 607
33	Rubber Bearing Sleeve
34	Air-Deflector Ring
35	Screw

NO	DESCRIPTION
36	Stator
37	Motor housing
38	Inductor
39	Brush plate base
40	Screw ST3.5*10
41	Brush plate
42	Carbon brush
43	Spring
44	Switch Button
45	Rear cover
46	Screw ST3.9*16
47	Hood
48	Dust cover
49	Spring
50	Washer
51	Spring guide
52	Washer
53	Bolt M5x12
54	Handle
55	Speed controller
56	Switch
57	Capacitor
58	Cord clip
59	Cable
60	Cord guard
61	Screw ST5*20
62	Auxiliary handle assy
62-1	Clamping band
62-2	T-bolt
62-3	Screw button
62-4	Clamp holder
62-5	block
62-6	Auxiliary handle
62-7	cap
63	Depth gauge
64	Washer